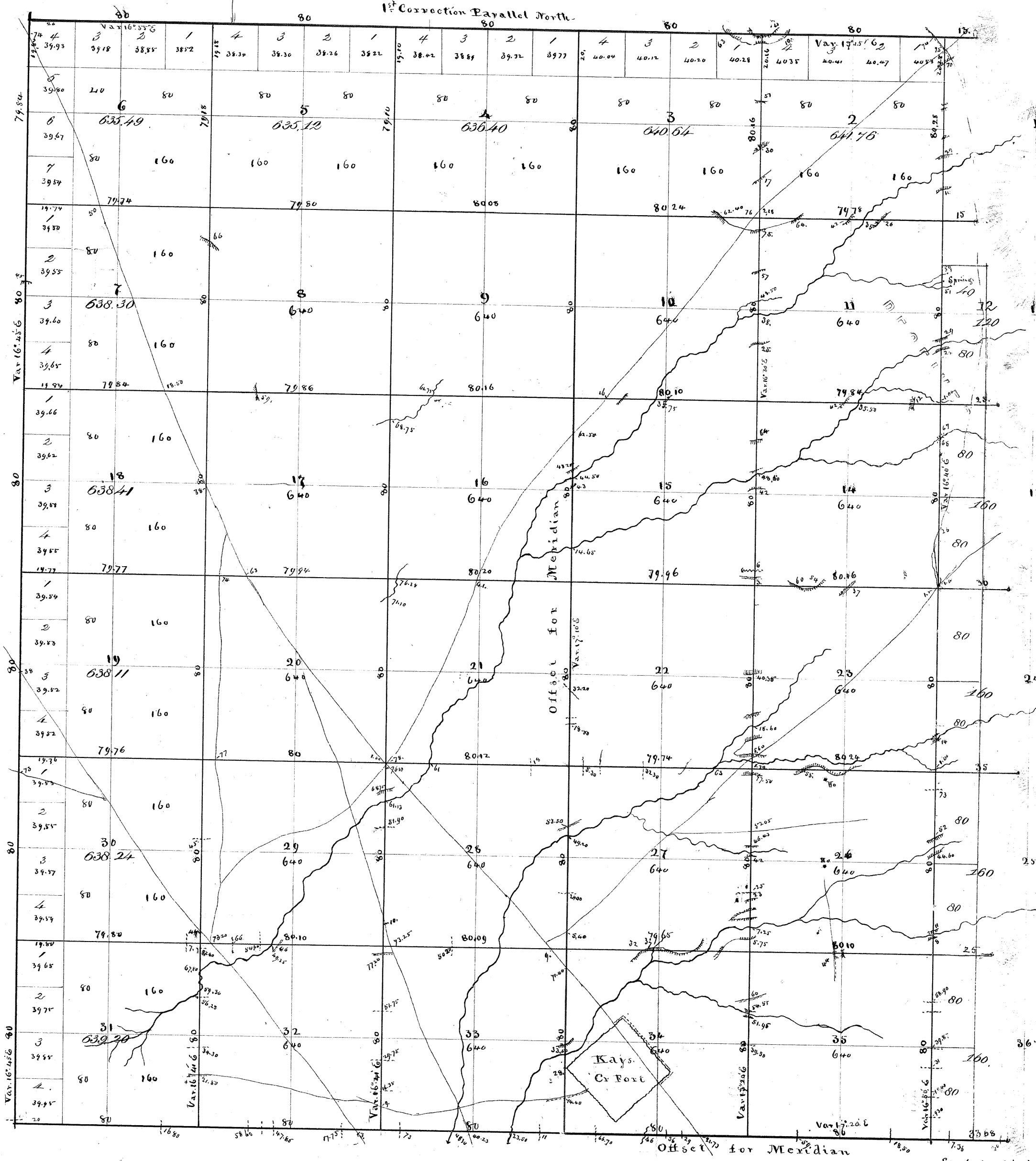


T 4 N — R 1 W . Salt Lake Meridian.

WASATCH MOUNTAINS



Notes  
 N. Bdy. 14-32  
 S. " 14-35-174  
 E. " 14-174-219  
 W. " 35  
 Subs. 14-33-174-219  
 Plat Books  
 Exts.  
 Subs. (2-10)/(29-1)/(31-1)

Surveyor General's Office  
 Salt Lake City Dec 20<sup>th</sup> 1855.  
 This map of Township No. 4 North of Range No. 1 West of Salt Lake Meridian is strictly conformable to the field notes of the survey thereof on file in this office which have been examined and approved—

David H. Burr  
 Surveyor General of Utah.

Total number of Acres 19,941.67

Scale 40 Chains to an Inch.

Survey designated	By whom surveyed	Date of Contract	Amount of Survey	When Surveyed
West Boundary	J. Proskowski	August 8 <sup>th</sup> 1855	5. 74. 54	3 <sup>rd</sup> 1/4 quarter of 1855
Section lines	do	do	50. 47. 79	do